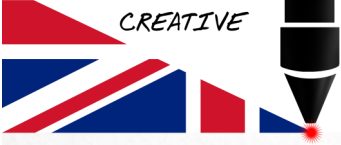


**LCUT**  
CREATIVE



Small lineside office

2mm scale/N gauge

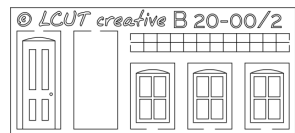
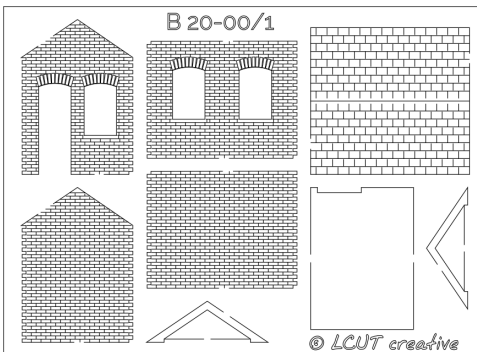


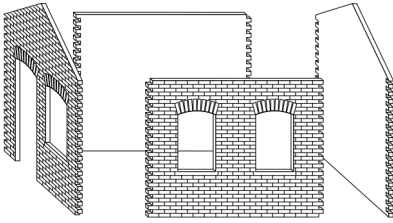
Unassembled and unpainted kit made from a range of laser cut wood based materials. Requires glue, paints, and glazing material to complete.

All drawings are not in scale. Some proportions on drawings may differ from reality.

Use wood or PVA glue for the paper/MDF/fibreboard parts and cyanoacrylate glue for any plastic parts if they are present. It is recommended to prime the MDF (brown) parts of this kit with suitable primer (spray or brush primer). After that regular acrylic or enamel paints can be used.

### KIT CONTENTS

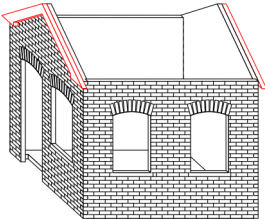




Start the assembly with the four walls and the floor. The side with the doors can be used on either side of the front wall (left show).

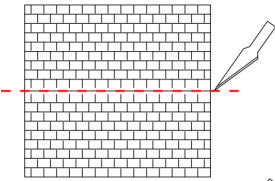


The notch in the floor needs to be located behind the door opening (clearance for the door).



We recommend to paint the brickwork and inside of the building at this stage.

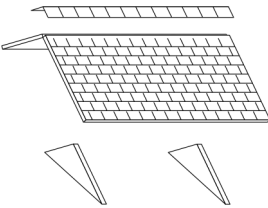
Paint the barge boards and glue them in making sure they are flush with the top edge of the gables.



Score the roof tile panel middle line as deep as possible without cutting through it. Repeat same procedure for the ridge tiles.

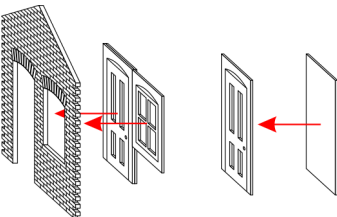


Fold the roof tiles and glue the roof supports in forming the roof. Finish the ridge with ridge tiles which also need to be folded.



Glue the 2 layers of the door together and glue them to the back of the panel with door opening.

The cellophane bag this kit came in can be used as glazing (as pictured on previous page).



Glue the windows in from behind to the side and front panels. Make sure the windows and doors are aligned well with the engraved outline.